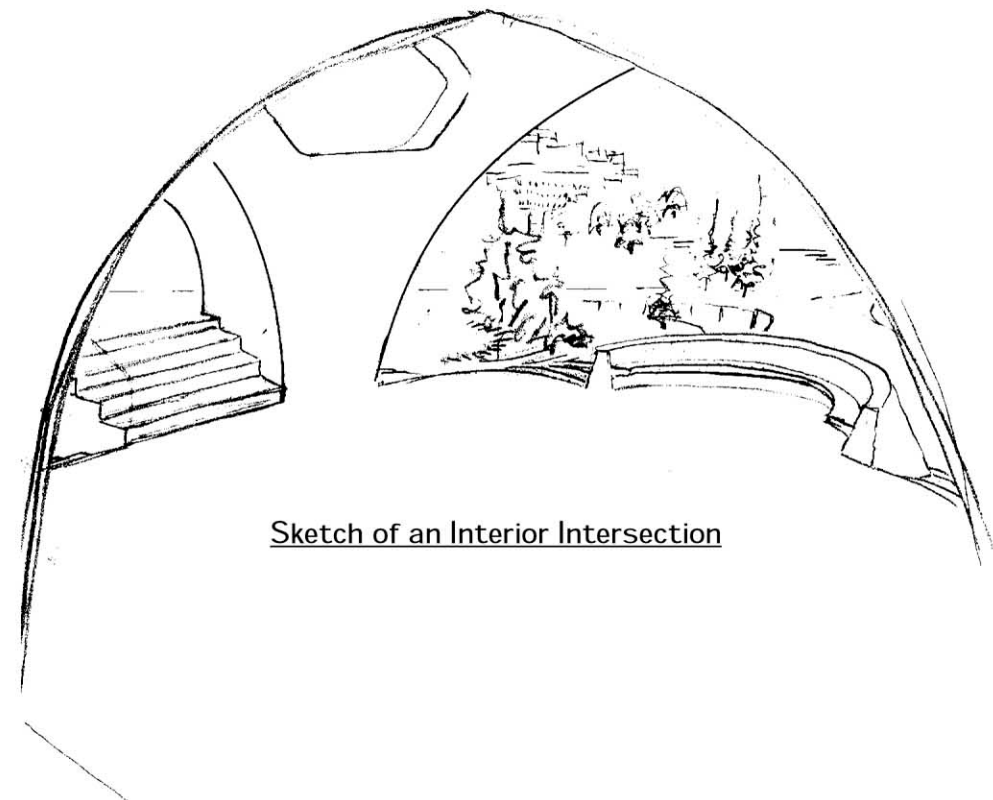
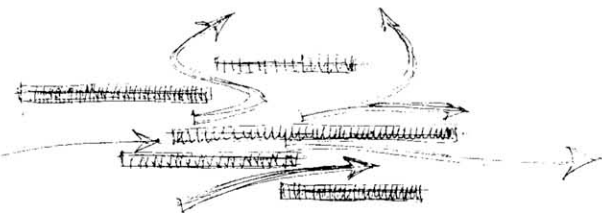


Modeled air flow analysis useful to determine wind eddys within and around structure.



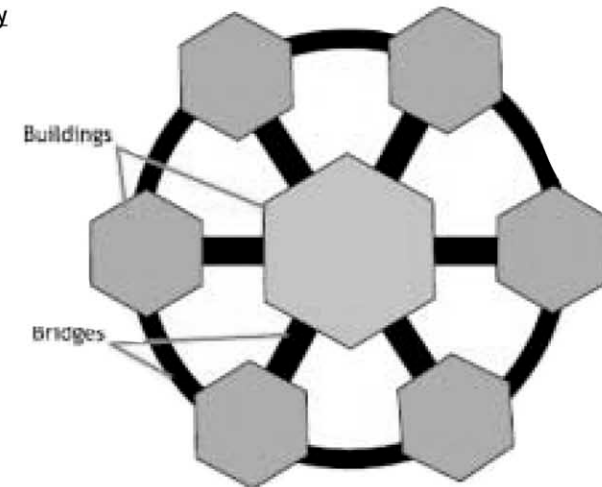
Sketch of an Interior Intersection

#### Concept Illustration for Extensibility

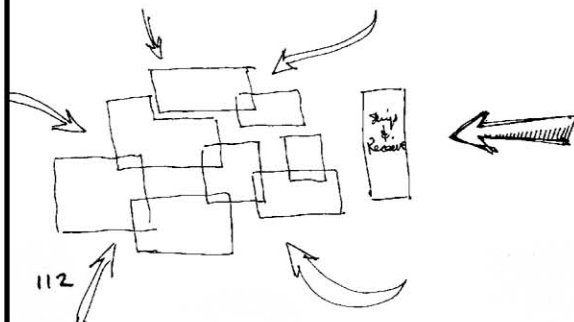
Primary central structure for core facilities and base population.

Peripheral structures may be added as needed to augment space and need requirements.

Actual configuration would be site dependent.



Drawn by Michael Listman



112

96

80

64

48

32

16

SEATING, AS NEEDED FOR EVENTS ON VARIOUS LEVELS.

"FLOORS" @ 16' O.C.

STEPS LEAD FROM "HIGH" LEVEL ON ONE SIDE TO "LOW" LEVEL ON THE OTHER.

PENETRATING LIGHT, SUGGEST STAINED GLASS.

ASCENT MAY WIND OR UNDULATE RICH CONNECTIONS POSSIBLE.

MULTI-USE ABUTMENT STRUCTURES

TERRAIN MAY BE HEAPED OR MOUNDED WATER FEATURES DESIRABLE.

SUFFICIENT TO SUPPORT EARTH BED OVERHEAD. BED MAY DRAIN THRU SUPPORTS.

0 10 20 30 40 50 100  
Scale: 1/4" = 10'

INTERSPACES MAY CONTAIN RETAIL FACILITIES.

INFILL MAY BE ENGINEERED TO AUGMENT STRUCTURAL INTEGRITY

SECTION OF A DOMED PUBLIC AREA

**ATTENTION**  
Contributions to the ARCOLOGY WORKING PAPERS are welcome.

#### ARCOLOGY WORKING PAPERS

DATE JUN, 2001 SCALE ANALOG # 1b

DRN BY NOTED REV

© 2001 Randall Hunt and others, as noted. • Duplication is permitted if page is reproduced in its entirety, including Title Block and copyright information; commercial use is prohibited. Discussion group at <http://groups.yahoo.com/group/arcolology>. Contributions welcome. Contact [randhunt@wildapatche.net](mailto:randhunt@wildapatche.net).